



Dedicated in
pharmaceutical
turnkey solutions

专注于制药设备领域
整体解决方案！



上海鄂炬医药科技有限公司
ETORCH PHARMTECH CO., LTD.

地址(Address):上海市嘉定区汇德路669号
NO.669,Huide Road, Jiading, Shanghai, China
电话(Office Tel.):+86 21-54327875
网址(Website):www.etch.com
邮箱(Email):info@etchcn.com

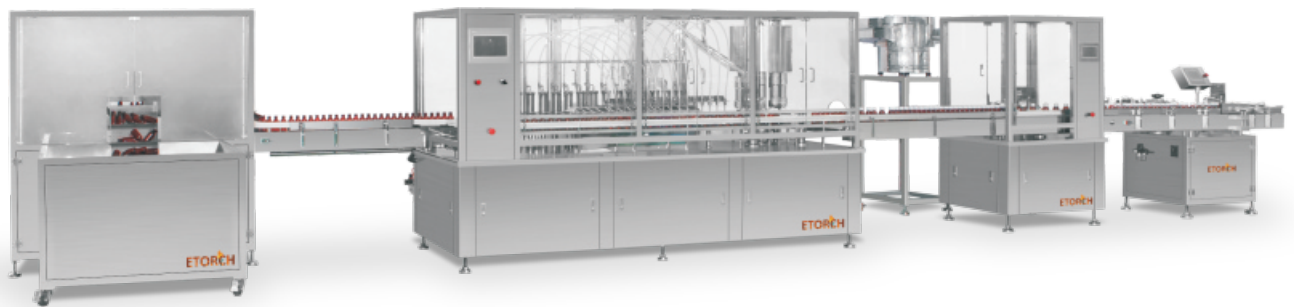


■ Plastic bottle syrup production line

塑料瓶糖浆生产联动线



型号 Model	适用规格 Adpoted bottle size	速度 Capacity	外形尺寸 Overall Size
JKLP-5	5-300 ml	20-250 b/min	1650×2660×1650 mm
JKGT-1	5-300 ml	40-60 b/min	2440×1350×1700 mm
JKGT-2	5-300 ml	80-100 b/min	3300×1100×1700 mm
JKGT-3	5-300 ml	120-150 b/min	3800×1100×1700 mm
JKGT-5	5-300 ml	20-250 b/min	4500×2230×1700 mm
JKDL	5-300 ml	20-250 b/min	2440×1650×1700 mm
JKLT	5-300 ml	20-250 b/min	2000×1050×1300 mm



■ Glass bottle syrup production line

玻璃瓶糖浆生产联动线



型号 Model	适用规格 Adpoted bottle size	速度 Capacity	外形尺寸 Overall Size
JKGP	30-500 ml	40-300 b/min	950×1200×1100 mm
JKQCX-1	30-500 ml	40-60 b/min	1400×1120×1140 mm
JKQCX-2	30-500 ml	80-100 b/min	1400×1120×1140 mm
JKRX	30-500 ml	40-100 b/min	5000×1700×2300 mm
JKGT-1	30-500 ml	40-60 b/min	2440×1350×1700 mm
JKGT-2	30-500 ml	80-100 b/min	3300×1100×1700 mm
JKGT-3	30-500 ml	120-150 b/min	3800×1100×1700 mm
JKGT-5	30-250 ml	200-300 b/min	4500×1100×1700 mm
JKLT	30-500 ml	200-300 b/min	2000×1050×1300 mm



■ Glass bottle infusion linkage line

玻璃瓶大输液联动线



型号 Model	适用规格 Adpoted bottle size	速度 Capacity	外形尺寸 Overall Size
JKGP	50-500 ml	40-100 b/min	950×1200×1100 mm
JKQCX-1	50-500 ml	40-60 b/min	1400×1120×1140 mm
JKQCX-2	50-500 ml	80-100 b/min	1400×1120×1140 mm
JKRX	50-500 ml	40-100 b/min	5000×1700×2300 mm
JKGS-1	50-500 ml	40-60 b/min	2440×1050×1700 mm
JKGS-2	50-500 ml	80-100 b/min	3300×1100×1700 mm
JKZ-1	50-500 ml	40-60 b/min	2440×1300×1700 mm
JKZ-2	50-500 ml	80-100 b/min	2600×1200×1700 mm
JKLT	50-500 ml	40-150 b/min	2000×1050×1300 mm

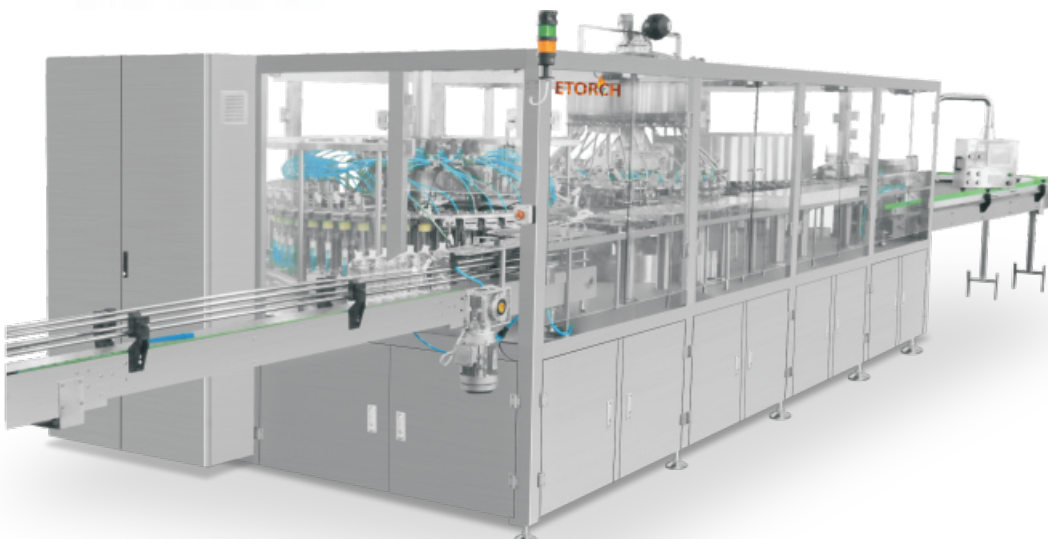


■ Plastic bottle infusion linkage line

塑料瓶大输液联动线



型号 Model	速度 Capacity	外形尺寸 Overall Size
JKPB8	120-140 b/min	9450×4337×3400 mm
JKPB10	150-170 b/min	10730×4337×3400 mm
JKPB12	180-200 b/min	12960×5477×3715 mm



■ Ampoule filling production linkage line

安瓿瓶灌装生产联动线



型号 Model	适用规格 Adpoted bottle size	速度 Capacity	外形尺寸 Overall Size
JKAFI-12	1-20 ml	200-500 b/min	9910×2200×2450 mm
JKAFI-16	1-20 ml	300-600 b/min	10042×2200×2450 mm



■ Vial filling production linkage line

西林瓶灌装生产联动线



型号 Model	适用规格 Adpoted bottle size	速度 Capacity	外形尺寸 Overall Size
JKFFL-4	2-30 ml	40-120 b/min	9050×2200×2450 mm
JKFFL-6	2-30 ml	60-200 b/min	9700×2200×2450 mm
JKFFL-8	2-30 ml	100-250 b/min	9700×2200×2450 mm
JKFFL-12	2-30 ml	150-400 b/min	10850×2200×2450 mm
JKFFL-16	2-30 ml	200-500 b/min	11770×2200×2450 mm



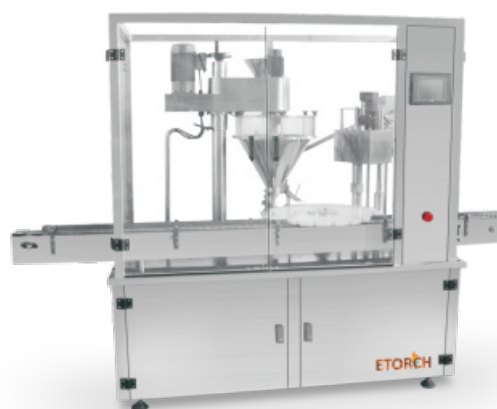


■ **Spray filling and capping machine**
喷雾剂灌装旋盖机

型号 Model	适用规格 Adpoted bottle size	速度 Capacity	外形尺寸 Overall Size
JKPG-1	3-25 ml	40-60 b/min	2440×1300×1700 mm
JKPG-2	3-25 ml	60-100 b/min	3000×1350×1700 mm

■ **Powder filling and capping machine**
粉剂灌装(轧)盖一体机

型号 Model	装量 Filling weight	速度 Capacity	外形尺寸 Overall Size
JKFZ-1	3-500 g	15-30 b/min(Single head)	2400×1200×1800 mm
JKFZ-2	(By change parts)	20-60 b/min(Double head)	3000×1200×1800 mm



■ **Electronic counting machine**
电子数粒机



型号 Model	适用规格 Adopted tablet dia.	速度 Capacity	外形尺寸 Overall Size
JKPZ-D8S	3-23 mm	3500-4500 tablets/min	2000×1500×1700 mm
JKPZ-D12	3-23 mm	3500-4500 tablets/min	1600×1500×1700 mm
JKPZ-D12S	3-23 mm	3500-4500 tablets/min	2200×1500×1700 mm
JKPZ-D16	3-23 mm	3500-4500 tablets/min	2200×1500×1700 mm

■ **Tube filling and sealing machine**
软管灌装封尾机

型号 Model	管子材质 Tube material	最大装量 Max. volume	速度 Capacity	适合软管直径 Tube dia.	外形尺寸 Overall Size
JKTF-80A	金属管 ALU tube	1-150 ml	30-80 tubes/min	10-35 mm	2300×1000×2200 mm
JKTF-80B	塑料管及复合管 Plastic tube	1-250 ml	30-80 tubes/min	10-60 mm	2300×1000×2200 mm



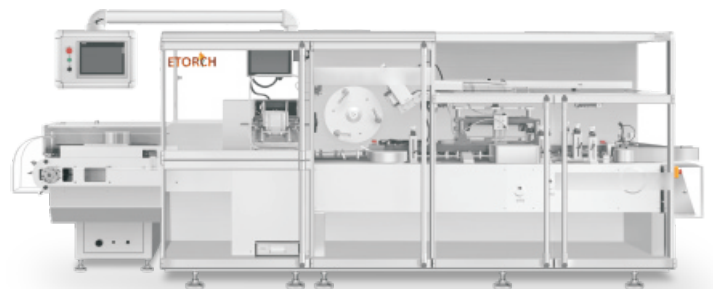


■ **Automatic inspection machine**
全自动灯检机

型号 Model	适用规格 Adpoted bottle size	速度 Capacity	外形尺寸 Overall Size
JKZ400-30	1-20ml安瓿瓶, 西林瓶 1-20ml ampoule and vial	400 b/min	3540 × 1700 × 2050 mm
JKZ600-30	1-20ml安瓿瓶, 西林瓶 1-20ml ampoule and vial	600 b/min	3850 × 1950 × 2050 mm

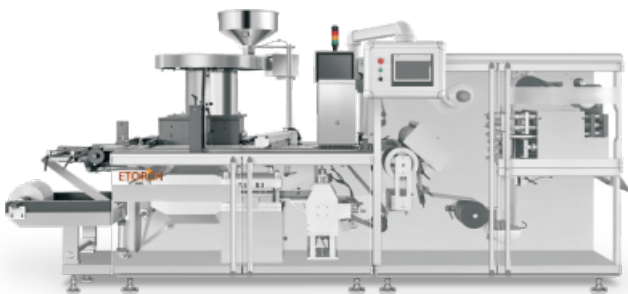
■ **Intelligent High Speed Cartoning Machine**
智能高速装盒机

型号 Model	速度 Capacity	外形尺寸 Overall Size
XWZ120	30-120 Cartons/min	3650×1330×1700 mm
XWZ300	100-300 Cartons/min	5150×1600×2100 mm
XWZ300II	60-220 Cartons/min	5160×1600×2100 mm



■ **Intelligent High Speed Alu-PVC/Alu-Alu Blister Packing Machine**
智能高速铝塑/铝铝泡罩包装机

型号 Model	速度 Capacity	外形尺寸 Overall Size
DPP160F	20-50 cycles/min	3400×550×1700 mm
DPP260TI	20-60 cycles/min	4420×710×1700 mm
DPP350F	20-35 cycles/min	3900×770×1700 mm
DPH260H	60-200 cycles/min	4860×1420×2100 mm
DPH320HII	60-200 cycles/min	5000×1500×2100 mm



■ **High-end vertical labeling machine**
立式贴标机

型号 Model	适用瓶子直径 Suitable for bottle diameter	速度 Capacity	外形尺寸 Overall Size
Y-400	Φ16-70 mm	0-400 b/min	2716×1333×1650 mm





■ High-end horizontal labeling machine (Full cover)

贴标机(带防护罩卧式圆瓶贴标机)

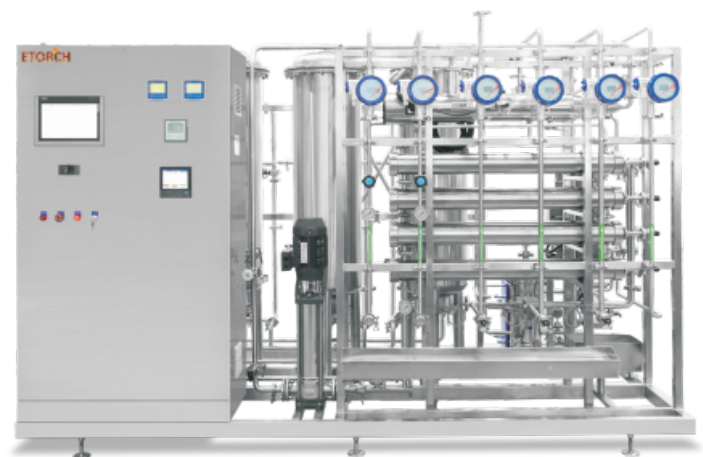
型号 Model	适用瓶子直径 Adopted bottle dia.	速度 Capacity	外形尺寸 Overall Size
Y-500	10-24 mm 16-30 mm	0-500 b/min	2650×1710×1650 mm

■ Purified water system

纯化水系统

纯化水质量: PW quality

导电率 Electrical conductivity	TOC	微生物 Microorganism
≤0.5 μS/cm	≤200 ppb	≤20 CFU/mL



■ Multi effect water distiller

多效蒸馏水机



型号 Model	蒸馏水产量 Distilled water output	外形尺寸 Overall Size
LD500-4S	≥ 500 L/h	1610×1290×2850 mm
LD500-5S	≥ 500 L/h	1910×1290×2850 mm
LD1000-5S	≥1000 L/h	2850×900×4100 mm
LD1000-6S	≥1000 L/h	3330×900×4100 mm
LD1500-6S	≥2000 L/h	3700×1000×4200 mm
LD2000-6S	≥2000 L/h	4200×1200×4300 mm
LD3000-6S	≥3000 L/h	4510×1200×4450 mm
LD4000-6S	≥4000 L/h	4510×1200×4800 mm
LD5000-6S	≥5000 L/h	6040×1350×5500 mm



■ **Pure steam generator**
纯蒸汽发生器

型号 Model	产量 Output	外形尺寸 Overall Size
PSG100	100 kg/h	1150×900×2300 mm
PSG200	200 kg/h	1200×850×2300 mm
PSG300	300 kg/h	1400×940×2400 mm
PSG400	400 kg/h	1400×940×2400 mm
PSG500	500 kg/h	1500×1100×2800 mm
PSG800	800 kg/h	1730×1100×3000 mm
PSG1000	1000 kg/h	1730×1100×3200 mm
PSG2000	2000 kg/h	2450×1250×3200 mm

■ **Preparation system**
配液系统

主要用于制药厂常规注射剂、口服液剂、冻干粉针剂、气雾喷剂、滴眼剂、消毒剂、半成品、培养基、缓冲液等产品的配制。

It is mainly used for the preparation of regular injections, oral liquid, freeze-dried powder injection, aerosol spray, eye drops, disinfectants, semi-finished products, medium, buffer and other products in pharmaceutical factories.



■ **Fermenter**
发酵罐

控制参数主要包括：

温度、转速、通气量、罐压、pH、Do、补料、消泡、生物量、称重等。

溶剂：5 L~50 m³

The control parameters mainly include:

Temperature, rotating speed, ventilation capacity, tank pressure, pH, Do, feed supplement, defoaming, biomass live and scaling, etc.

Volume: 5 L~50 m³